



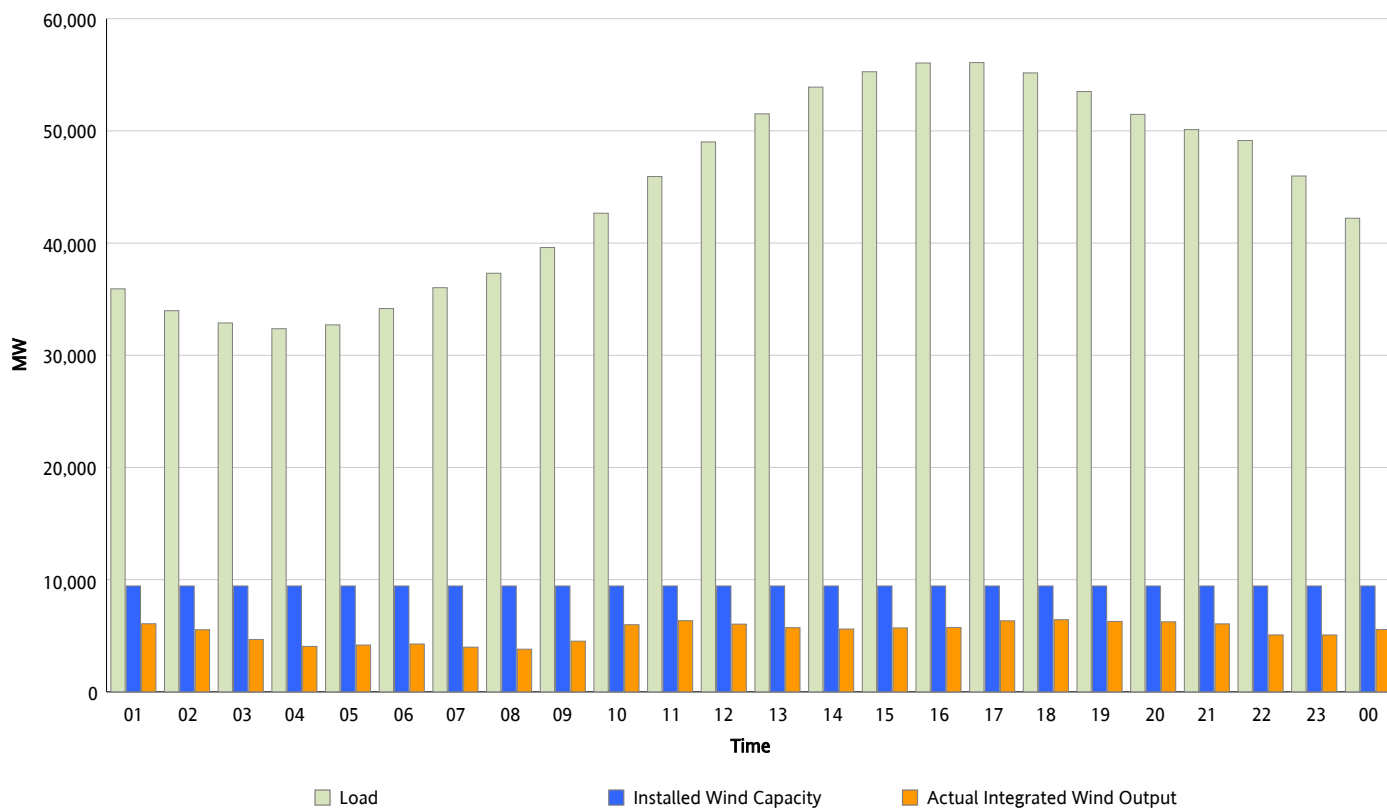
ERCOT Grid Operations

Wind Integration Report : 07/02/2012

Peak Load	56,087 MW
Load Peak Hour (HE)	17
Wind Over Peak	6,334 MW
Wind Record 06/19/12	8,368 MW
Max Wind Value*	6,635 MW
Wind Peak Time	17:11
Wind Integration %	11.98 %

Hourly Average Actual Load vs. Actual Wind Output

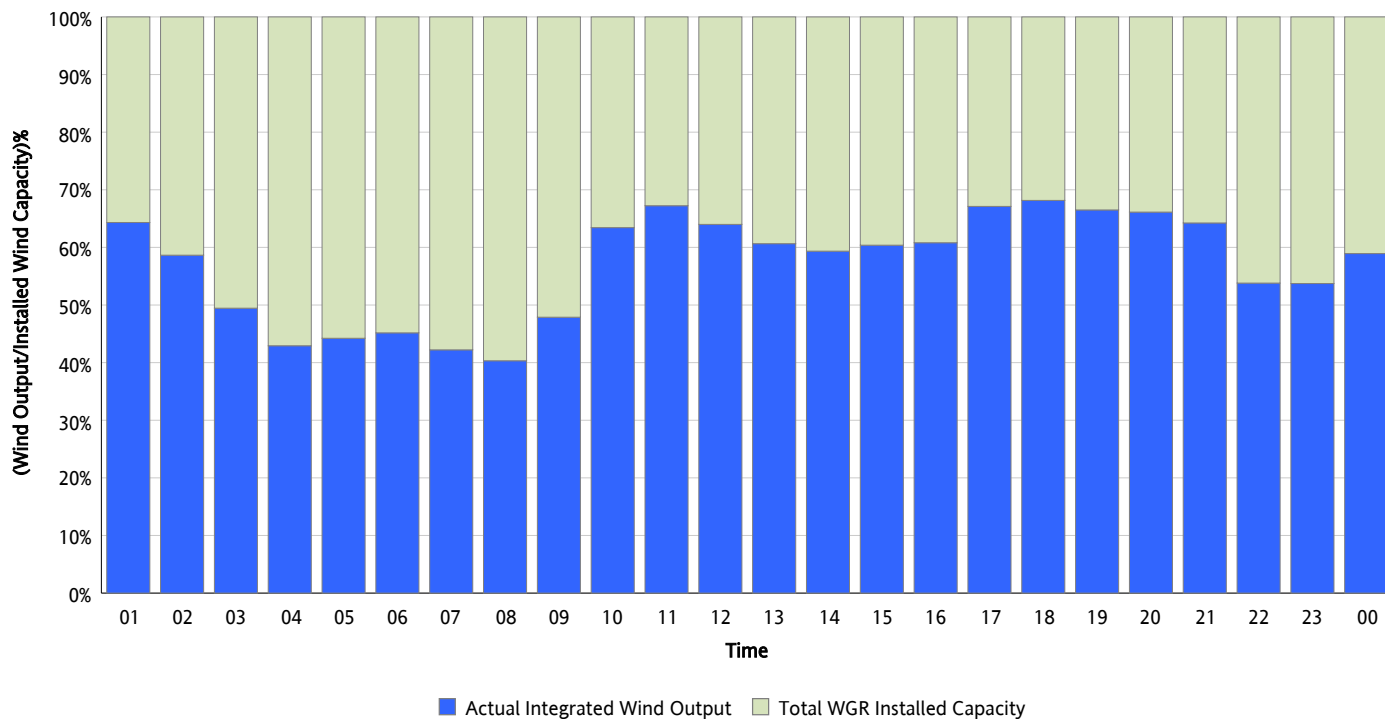
07/02/2012



* Wind Record and Wind Max represent instantaneous values and the rest of the values are integrated over the hour

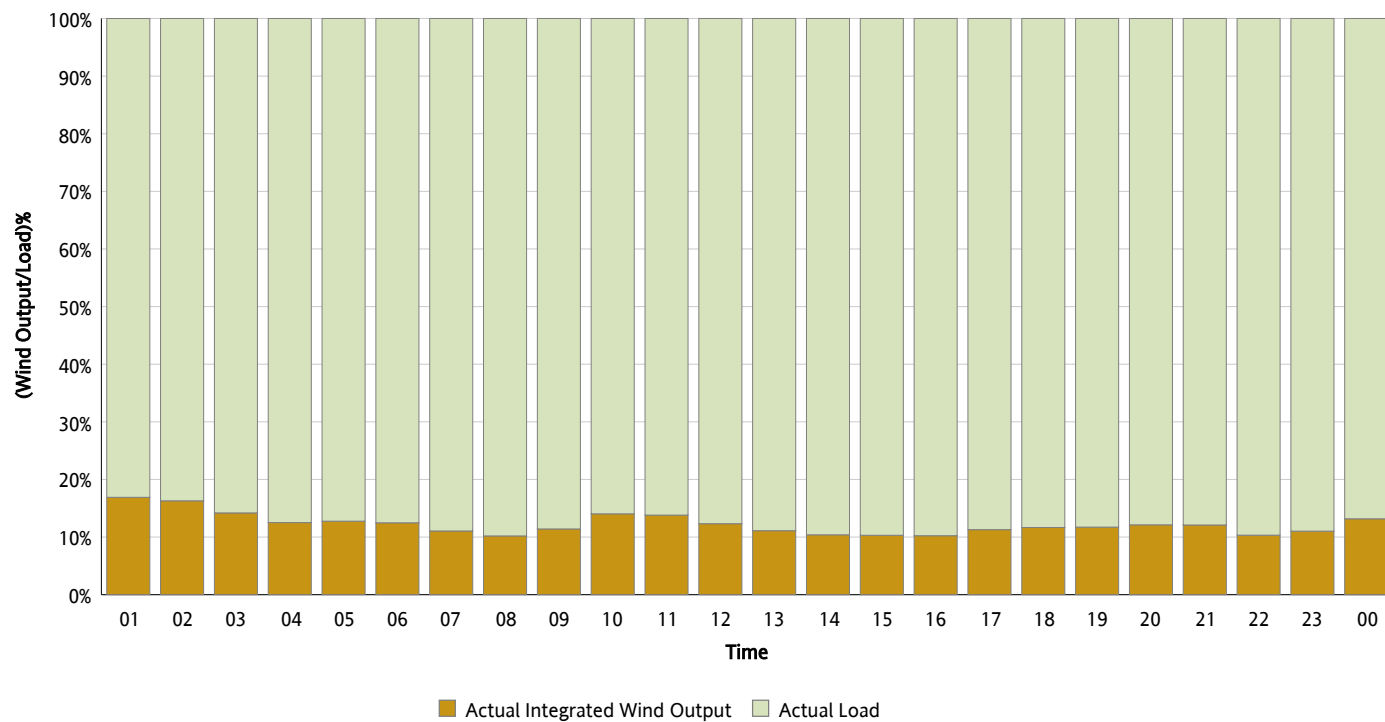
Actual Wind Output as a Percentage of the Total Installed Wind Capacity

07/02/2012



Actual Wind Output as a Percentage of the ERCOT Load

07/02/2012



ERCOT Load vs. Actual Wind Output

06/25/2012 - 07/02/2012

